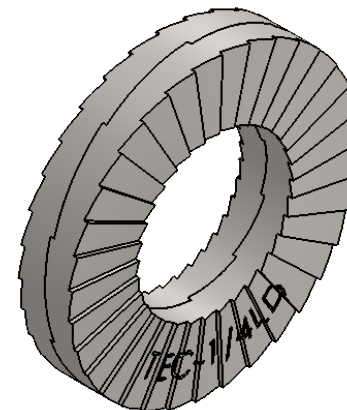
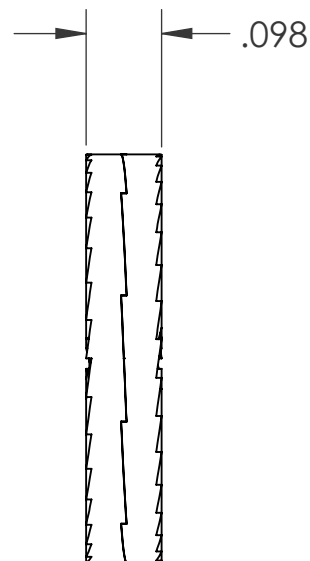
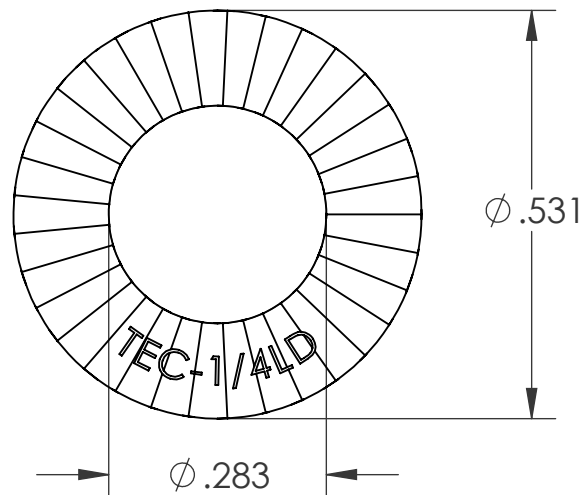




REVISIONS			
REV.	DESCRIPTION	DATE	ECN
A	INITIAL RELEASE	6/9/17	2690
B	CORRECTED MARKING	6/20/17	2706
C	MATERIAL UPDATE	7/11/2018	3055



PROPRIETARY AND CONFIDENTIAL
THIS DRAWING, AND THE INFORMATION CONTAINED HEREIN, ARE THE PROPERTY OF SHEREX AND ARE NOT TO BE USED IN ANY MANNER DETRIMENT TO THE INTEREST OF THE COMPANY.
SHEREX FASTENING SOLUTIONS RESERVES THE RIGHT TO REVISE PART/DRAWING WITHOUT NOTICE.

DRAWING NO.:
TEC-250LD

UNLESS OTHERWISE SPECIFIED:		NAME	DATE	 			
DIMENSIONS ARE IN INCHES		DRAWN	MTB			6/9/17	
TOLERANCES: ANGULAR: MACH ± 1 BEND ± 1 I.D. TOLERANCE: ± .004 O.D. TOLERANCE: ± .008 THICKNESS TOLERANCE: ± .01		CHECKED			DESCRIPTION: LARGE DIAMETER TEC WASHER GLUED PAIR 1/4"		
INTERPRET GEOMETRIC TOLERANCING PER: ASME Y14.5M-1994		ENG APPR.	JVK	6/9/17			
MATERIAL		MFG APPR.					
SCM435 OR 4130 STEEL, HT: THROUGH HARDEN 465 HV MIN		Q.A.					
FINISH DELTA PROTEKT BASE COAT (KL100) & TOP COAT (VH302GZ)		COMMENTS: E-mail: info@disc-lock.com www.disc-lock.com Phone: 866-474-3739 Fax: 716-875-0358			SIZE A	PART NO.: TEC-1/4LD	REV C
DO NOT SCALE DRAWING		SCALE: 4:1			WEIGHT:	SHEET 1 OF 1	